

**BALDOR® • RELIANCE** 

**Product Information Packet**

**VJPFPM2547T**

**60//50HP, 1770//1470RPM, 3PH, 60//50HZ, 364J**

Part Detail							
Revision:	F	Status:	PRD/A	Change #:		Proprietary:	No
Type:	AC	Elec. Spec:	42WGW980	CD Diagram:	CD0104	Mfg Plant:	
Mech. Spec:	42E338	Layout:	42LYE338	Poles:	04	Created Date:	12-10-2015
Base:	N	Eff. Date:	11-07-2019	Leads:	12#8		

Specs			
Catalog Number:	VJPFPM2547T	Heater Indicator:	No Heater
Enclosure:	OPSB	Insulation Class:	F
Frame:	364JP	Inverter Code:	Not Inverter
Frame Material:	Steel	KVA Code:	F
Output @ Frequency:	50.000 HP @ 50 HZ	Lifting Lugs:	Vertical Lifting Lugs
	60.000 HP @ 60 HZ	Locked Bearing Indicator:	Locked Bearing
Synchronous Speed @ Frequency:	1500 RPM @ 50 HZ	Motor Lead Quantity/Wire Size:	12 @ 8 AWG
Voltage @ Frequency:	460.0 V @ 60 HZ	Motor Lead Exit:	Ko Box
	380.0 V @ 50 HZ	Motor Lead Termination:	Flying Leads
	230.0 V @ 60 HZ	Motor Type:	4252M
	190.0 V @ 50 HZ	Mounting Arrangement:	F1
Agency Approvals:	CSA EEV	Power Factor:	84
	UL	Product Family:	Fire Pump Motor
Auxillary Box:	No Auxillary Box	Pulley End Bearing Type:	Ball
Auxillary Box Lead Termination:	None	Pulley Face Code:	C-Face
Base Indicator:	No Mounting	Pulley Shaft Indicator:	Tapped & Key
Bearing Grease Type:	Polyrex EM (-20F +300F)	Rodent Screen:	Included
Blower:	None	Shaft Extension Location:	Pulley End

<b>Current @ Voltage:</b>	72.000 A @ 460.0 V	<b>Shaft Ground Indicator:</b>	No Shaft Grounding
	72.000 A @ 380.0 V	<b>Shaft Rotation:</b>	Reversible
	144.000 A @ 230.0 V	<b>Shaft Slinger Indicator:</b>	Shaft Slinger
	144.000 A @ 190.0 V	<b>Speed Code:</b>	Single Speed
<b>Design Code:</b>	B	<b>Motor Standards:</b>	NEMA
<b>Drip Cover:</b>	Drip Cover	<b>Starting Method:</b>	Wye Start - Delta Run
<b>Duty Rating:</b>	CONT	<b>Thermal Device - Bearing:</b>	None
<b>Electrically Isolated Bearing:</b>	Not Electrically Isolated	<b>Thermal Device - Winding:</b>	None
<b>Feedback Device:</b>	NO FEEDBACK	<b>Vibration Sensor Indicator:</b>	No Vibration Sensor
<b>Front Face Code:</b>	Standard	<b>Winding Thermal 1:</b>	None
<b>Front Shaft Indicator:</b>	None	<b>Winding Thermal 2:</b>	None

Nameplate NP3454L											
CAT.NO.	VJPFPM2547T			CUST P/N				I.P.	23		
SPEC.	42E338W980H2			SER.NO.				FRAME	364JP		
HZ	60	HP	60	RPM	1770	HZ	50	HP	50	RPM	1470
VOLTS	230/460			CODE	F	VOLTS	190/380			CODE	F
AMPS	144/72			DES	B	AMPS	144/72			DES	B
EFF	93.6	SER.F.	1.15	PF	84	EFF	93	SER.F.	1.15	PF	84
RATING	40C AMB-CONT			DE BRG	6313			GREASE	POLYREX EM		
BLANK				ODE BRG	6311			MTR. WT.	480		
				CLASS	F						
				ENCL	OPSB						
								PH	3		
								CC	010A		
HTR-VOLTS		HTR-AMPS		HTR-WATTS							

Parts List		
Part Number	Description	Quantity
SA311615	SA 42E338W980H2	1.000 EA
RA299039	RA 42E338W980H2	1.000 EA
HA6360	LIFTING LUG FOR 42 FRAME MOTORS.	2.000 EA
HA6017	CAST ADAPTER, 40,42 KOBX	1.000 EA
19XW3118A12	.31-18 X .75 HEX WASHER HEAD TAPTITE II	2.000 EA
HW1001A31	LOCKWASHER 5/16, ZINC PLT.591 OD, .319 I	2.000 EA
WD1000B25	GND LUG, BURNDY L125HP OR T&B L125HP-BB	1.000 EA
19XW3118G08	.31-18X.50,HEX WSHR HD,TAPTITE 2,GREEN	1.000 EA
10CB3002	CONDUIT BOX CAST W/3.625 LEAD HOLE	1.000 EA
19XW3118A12	.31-18 X .75 HEX WASHER HEAD TAPTITE II	4.000 EA
HW1001A31	LOCKWASHER 5/16, ZINC PLT.591 OD, .319 I	4.000 EA
42EP3200A02	FR ENDPLATE, MACH	1.000 EA
HA1108A01	RODENT SCREEN	1.000 EA
51XW1032A06	10-32 X .38, TAPTITE II, HEX WSHR SLTD S	4.000 EA
HW5100A13	W4627-047 WVY WSHER	1.000 EA
42EP1400A03	PU ENDPLATE, MACH W/ RODENT SCREENS	1.000 EA
HA1165A02	RODENT SCREEN FOR 42 PU. C-FACE E.P.	1.000 EA
51XW1032A06	10-32 X .38, TAPTITE II, HEX WSHR SLTD S	1.000 EA
10XN3816K56	3/8-16 X 3 1/2 HEX HEAD MACHINE SCREW,	4.000 EA
HW1001A38	LOCKWASHER 3/8, ZINC PLT .688 OD, .382 I	4.000 EA
HA7204	"L" SHAPE LIFTING LUG FOR 42 FRAME MOTOR	2.000 EA
XY5013A12	NUT,1/2-13,HEX,STEEL,ZINCPLATED	8.000 EA
42FH2500A01	DRIP COVER MOD 42 OPEN	1.000 EA
10XN2520K12	1/4-20 X.75 GRD 5	4.000 EA

Parts List (continued)		
Part Number	Description	Quantity
HW1001A25	LOCKWASHER 1/4, ZINC PLT .493 OD, .255 I	4.000 EA
10CB3500SP	CONDUIT BOX LID, CAST	1.000 EA
51XW2520A12	.25-20 X .75, TAPTITE II, HEX WSHR SLTD	4.000 EA
HW4600B82	V-RING SLINGER 2.500 X 2.900 X .28 VITON	1.000 EA
HW2501G18	SQUARE STEEL KEY .375 X 2.00 LONG	1.000 EA
LB1115N	LABEL,LIFTING DEVICE (ON ROLLS)	1.000 EA
LB1182	WARNING LABEL FOR MOTORS WITH EYENUTS	1.000 EA
HA4051A00	PLASTIC CAP FOR GREASE FITTING	1.000 EA
HW4500A03	GREASE FITTING, .125 NPT 1610(ALEMITE) 8	1.000 EA
HW4500A17	317400 ALEMITE GREASE RELIEF	1.000 EA
MJ1000A02	GREASE, MOBIL POLYREX EM - 124047	0.030 LB
HA4051A00	PLASTIC CAP FOR GREASE FITTING	1.000 EA
HW4500A03	GREASE FITTING, .125 NPT 1610(ALEMITE) 8	1.000 EA
HW4500A17	317400 ALEMITE GREASE RELIEF	1.000 EA
MG1025R44	WILKOFAS, 784.109, CARMINE RED #3002	0.050 GA
85XU0407S04	4X1/4 U DRIVE PIN STAINLESS	4.000 EA
HA3151A07	THRUBOLT STUD 1/2-13 X 20.000	4.000 EA
42AD2001A01	BAFFLE PLATE 42 OPEN, SLOTTED BAND MTRS	1.000 EA
42AD2001A01	BAFFLE PLATE 42 OPEN, SLOTTED BAND MTRS	1.000 EA
LB1119N	WARNING LABEL	1.000 EA
LC0104A01	CONNECTION DIAGRAM	1.000 EA
NP3454L	ALUM FIRE PUMP MOTOR(LEGACY/BALDOR ONLY)	1.000 EA
10PA1052	PACKAGING GROUP, PRINT PK1151A06	1.000 EA
MN416A01	TAG-INSTAL-MAINT no wire (1200/bx) 3/19	1.000 EA

**AC Induction Motor Performance Data**

Record # 54369 - Typical performance - not guaranteed values

<b>Winding:</b> 42WGW980-R001	<b>Type:</b> 4252M	<b>Enclosure:</b> OPSB
-------------------------------	--------------------	------------------------

Nameplate Data				460 V, 60 Hz: High Voltage Connection	
Rated Output (HP)	60//50			Full Load Torque	178 LB-FT
Volts	230/460//190/380			Start Configuration	direct on line
Full Load Amps	144/72			Breakdown Torque	489 LB-FT
R.P.M.	1770//1470			Pull-up Torque	222 LB-FT
Hz	60//50	Phase	3	Locked-rotor Torque	299 LB-FT
NEMA Design Code	B	KVA Code	F	Starting Current	406 A
Service Factor (S.F.)	1.15			No-load Current	26.6 A
NEMA Nom. Eff.	93.6	Power Factor	83	Line-line Res. @ 25°C	0.13192 Ω
Rating - Duty	40C AMB-CONT			Temp. Rise @ Rated Load	54°C
S.F. Amps				Temp. Rise @ S.F. Load	67°C
				Locked-rotor Power Factor	27.7

Load Characteristics 460 V, 60 Hz, 60 HP

% of Rated Load	25	50	75	100	125	150	S.F.
Power Factor	49	70	80	84	85	84	85
Efficiency	91.3	93.9	94.2	93.6	92.8	91.5	93.1
Speed	1794	1787.2	1780.6	1772.3	1764.4	1753	1768
Line amperes	31.4	42	56.1	71.8	89	109	82.1

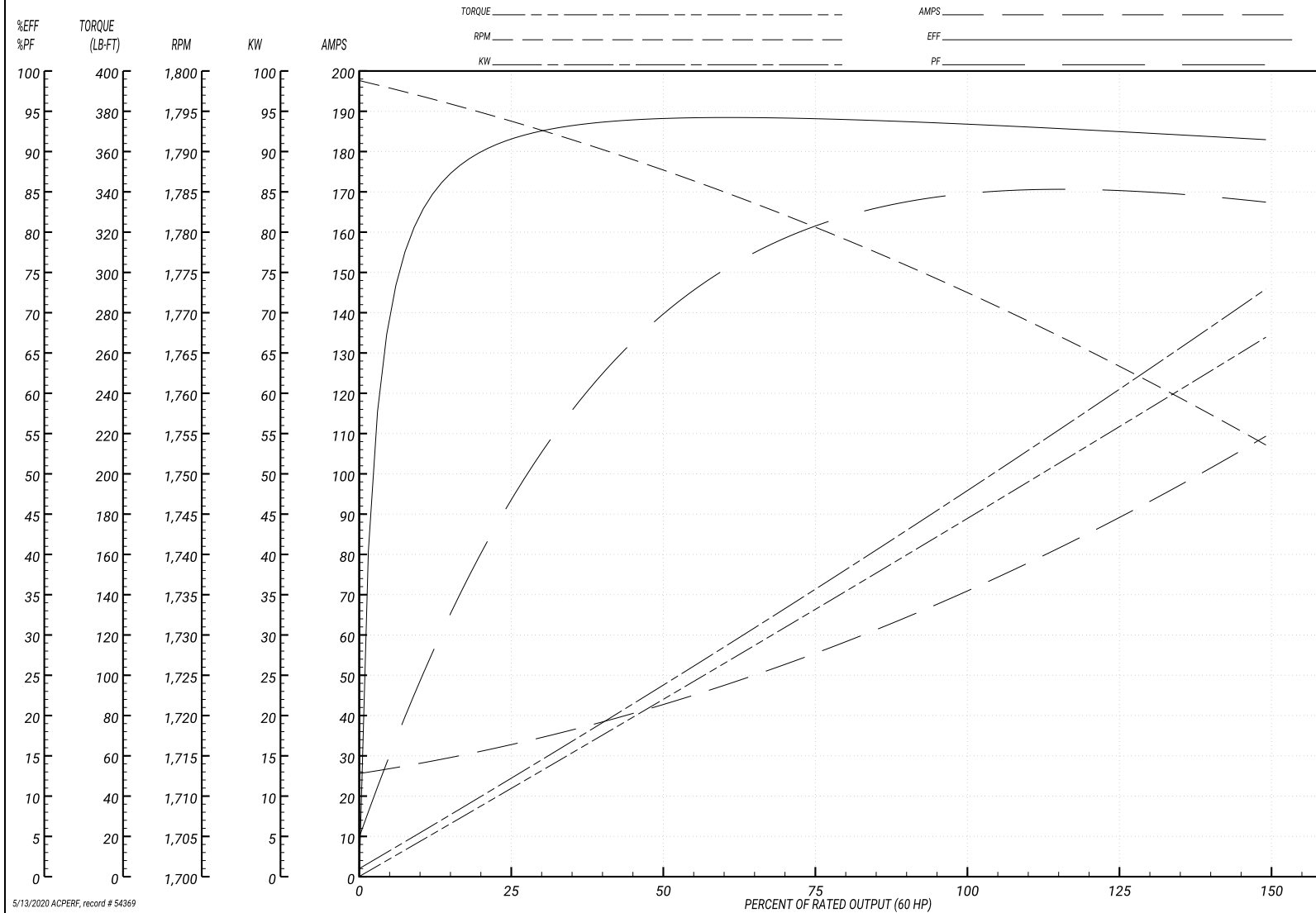
Performance Graph at 460V, 60Hz, 60.0HP Typical performance - Not guaranteed values

ABB Motors and Mechanical Inc.

WINDING # 42WGW980

Typical performance - not guaranteed values.

60 HP 3 PH 60 HZ 1772.3 RPM 460 V 4252M  
 TORQUES(LB-FT): PO=489 PU=222 LR=299 LRA=406



5/13/2020 ACPERF, record # 54369

**AC Induction Motor Performance Data**

Record # 54370 - Typical performance - not guaranteed values

<b>Winding:</b> 42WGW980-R001	<b>Type:</b> 4252M	<b>Enclosure:</b> OPSB
-------------------------------	--------------------	------------------------

Nameplate Data				380 V, 50 Hz: High Voltage Connection	
Rated Output (HP)	60//50			Full Load Torque	179 LB-FT
Volts	230/460//190/380			Start Configuration	direct on line
Full Load Amps	144/72			Breakdown Torque	472 LB-FT
R.P.M.	1770//1470			Pull-up Torque	233 LB-FT
Hz	60//50	Phase	3	Locked-rotor Torque	314 LB-FT
NEMA Design Code	B	KVA Code	F	Starting Current	397 A
Service Factor (S.F.)	1.15			No-load Current	25.7 A
NEMA Nom. Eff.	93.6	Power Factor	83	Line-line Res. @ 25°C	0.13 Ω
Rating - Duty	40C AMB-CONT			Temp. Rise @ Rated Load	55°C
S.F. Amps				Temp. Rise @ S.F. Load	69°C
				Locked-rotor Power Factor	30.9
				Rotor inertia	6.93 LB-FT <sup>2</sup>

**Load Characteristics 380 V, 50 Hz, 50 HP**

% of Rated Load	25	50	75	100	125	150	S.F.
Power Factor	51	72	81	85	86	84	86
Efficiency	90.8	93.3	93	93.1	91.7	90	92.3
Speed	1494	1487	1480	1472	1464	1453	1467
Line amperes	30.7	41.6	56.1	72.3	90.1	111	83

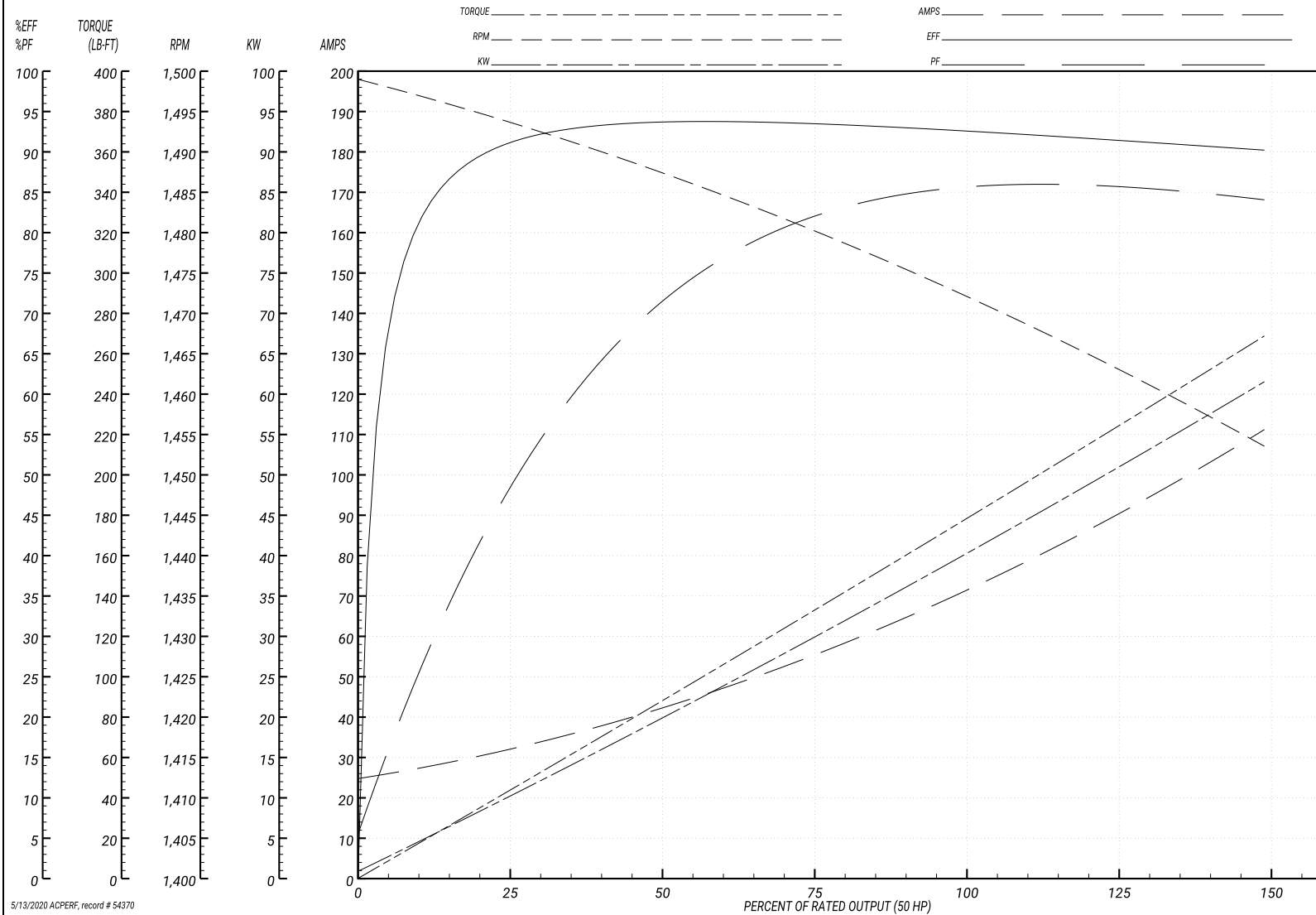
Performance Graph at 380V, 50Hz, 50.0HP Typical performance - Not guaranteed values

ABB Motors and Mechanical Inc.

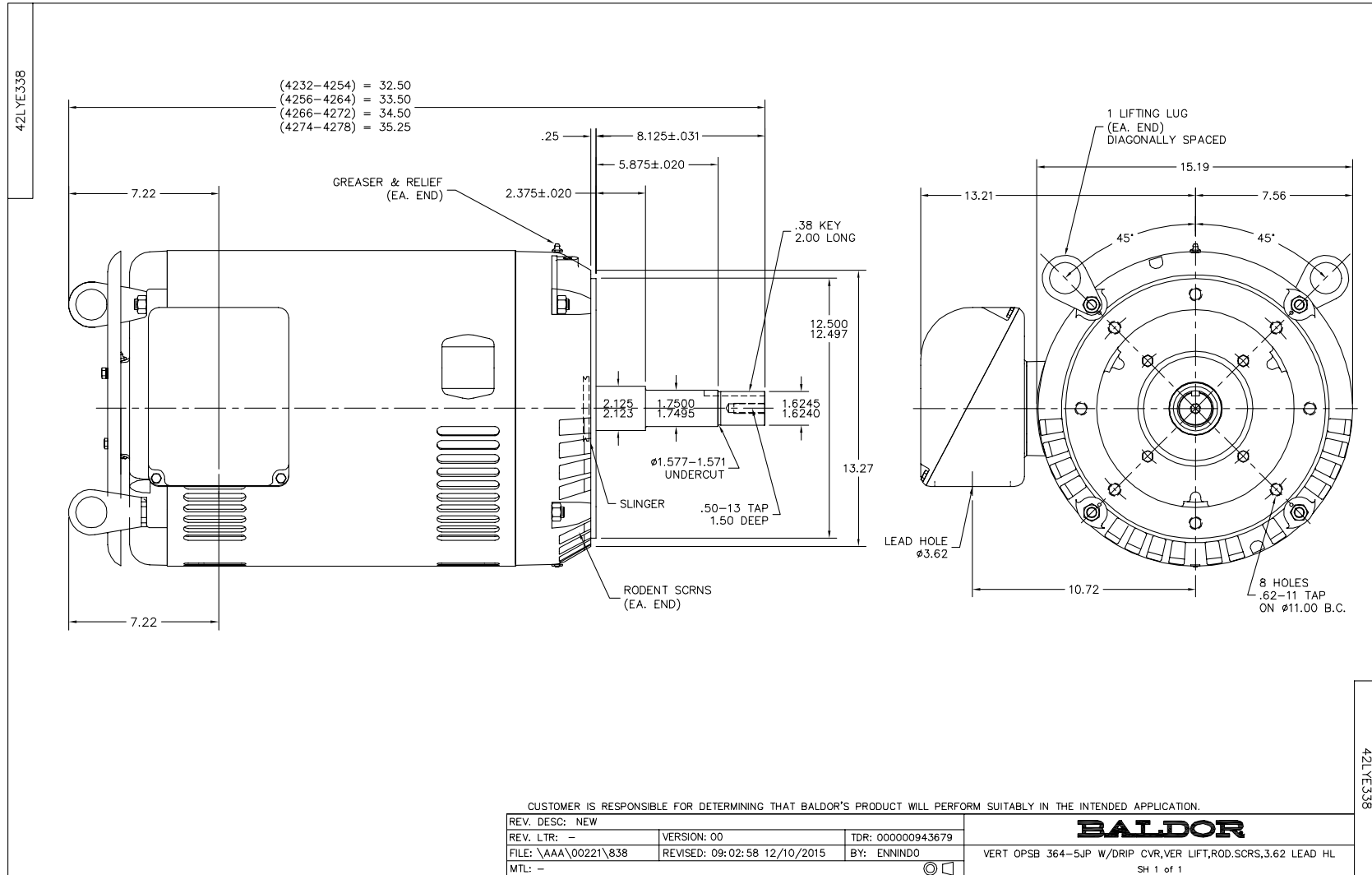
WINDING # 42WGW980

Typical performance - not guaranteed values.

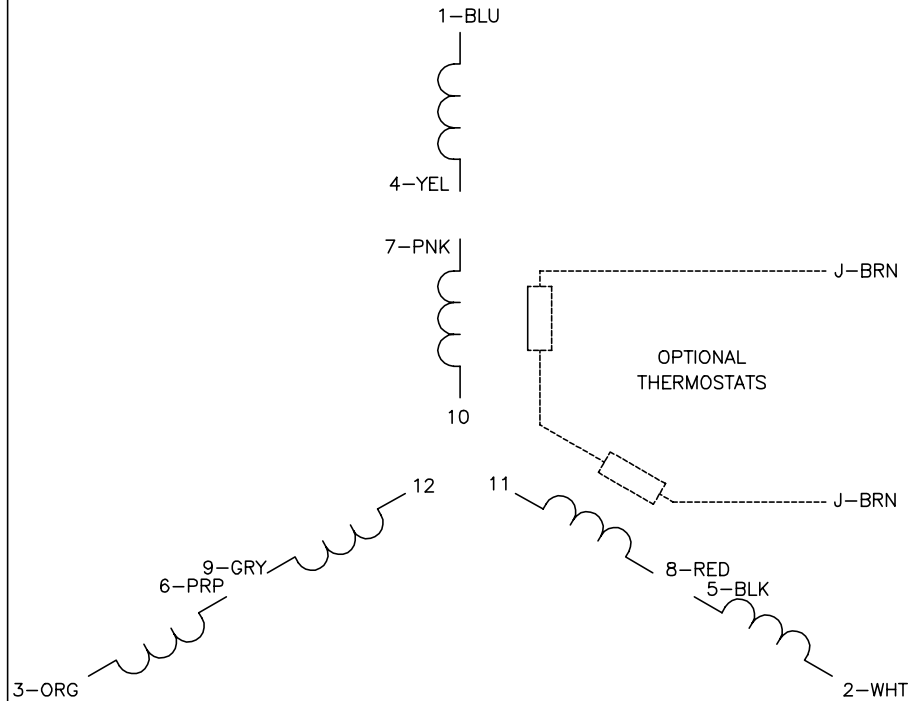
50 HP 3 PH 50 HZ 1472 RPM 380 V 4252M  
 TORQUES(LB-FT): PO=472 PU=233 LR=314 LRA=397



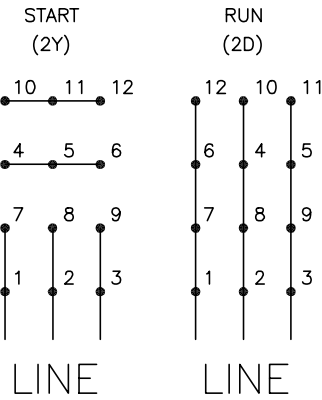
5/13/2020 ACPERF, record # 54370



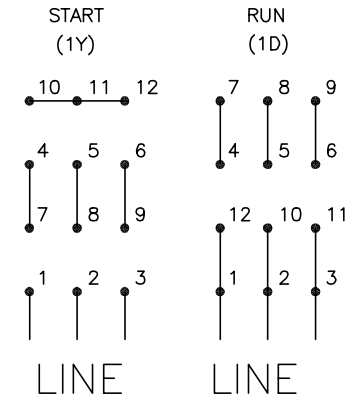
CD0104



**LOW VOLTAGE**



**HIGH VOLTAGE**



**NOTES:**

1. INTERCHANGE ANY TWO LINE LEADS TO REVERSE ROTATION.
2. OPTIONAL THERMOSTATS ARE PROVIDED WHEN SPECIFIED.
3. ACTUAL NUMBER OF INTERNAL PARALLEL CIRCUITS MAY BE A MULTIPLE OF THOSE SHOWN ABOVE.
4. LEAD COLORS ARE OPTIONAL. LEADS MUST ALWAYS BE NUMBERED AS SHOWN.

CD0104

REV. DESC: ADD CLASS CONN00000007		
REV. LTR: D	VERSION: 01	TDR: 000001099922
FILE: \AAA\00008\377	REVISED: 09:02:55 02/19/2019	BY: ENBRIRO
MTL: -	© □	

**BALDOR - RELIANCE®**

3PH, DV, 12 LEADS, Y START/D RUN

SH 1 of 1

Marketing maintained PDF of MN416:

<http://www.baldor.com/support/Literature/Load.ashx/MN416?ManNumber=MN416>